

## WHAT'S INSIDE:

### PAGE 2

Assignments, Guests, Hospitality, Announcements

### PAGE 3

Fines, Happy Dollars, Social Events

### PAGE 4

Club Calendar and Weekly Numbers

### PAGE 5

Three-Minute Speech, Busload of Shoppers

### PAGE 6

Centennial Memory Gem, Club Info, Thanks to Our Advertisers

### PAGES 7-10

Thrift Sale Work Schedules



# Kiwaniis®

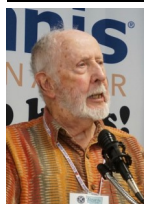
## CLUB OF ANN ARBOR

Volume 9, Issue 47

August 20, 2018

### TODAY'S PROGRAM...

#### Local Radio, Past & Future



**Al Gallup**

Al Gallup introduced our speaker Arthur R. Vuolo, Jr. who reflected on local and national radio. Al first met Arthur at Ann Arbor High School, and as a school counselor, Al puts Arthur in the good student column. He noted that Arthur has a huge collection of radio broadcasters on video and for years prepared a radio station reference directory.

Arthur noted that today, August 20 is national radio day, the 98th anniversary of commercial radio.

The first radio station in the United States was 8NK in Detroit which is now WWJ. He then recounted the start of radio in Ann Arbor in the early 1920's, noting that by 1940 those stations had disappeared. In 1945 a resurgence with WPAG (W followed by Paul and Green, station owners) and WHRV (W followed by Huron Valley). Bob Ufer started announcing UM football in 1945. Art then announced that his video about Bob Ufer will be shown at the Michigan Theatre on October 5, 2018. We then viewed his 2018 UM football season kickoff video which got the blue blood flowing in many, GO BLUE! Arthur has been making videos of UM football games since 1979, the good, the bad and the ugly. He credits his video of

Jim Brandstatter doing his first play by play of a Michigan football game at Northwestern as being part of former Michigan Athletic Director, Dave Branden's, decision to hire Jim full time.

We then viewed a selection of the many videos he has made of radio personalities from across the nation. These videos are on display in the Radio Hall of Fame in Chicago. This was a nostalgic program with hope for the future of radio.

### FOLLOW-UP FROM LAST WEEK'S PROGRAM...

Hey Everybody, exciting news... I've told you I'm getting a podcast going, well, it's up and on the net... here is a link to find it <http://www.podcastdetroit.com/artist/the-brandy-show/>. You can also access it from my Facebook page. Nothing ventured nothing gained... talk to you soon. Go Blue! ~Jim Brandstatter

### NEXT WEEK'S PROGRAM...

**August 27**—*Reading Labels & Nutrition*. Speaker: Allison Mankowski. Introduction by Demond Johnson.

### UPCOMING PROGRAMS...

- **September 4 (Tuesday)**—*Albert Kahn in Detroit*. Speaker: Michael Hodges, Author. Introduction by Dale Leslie.
- **September 10**—*Ele's Place; Children Handling Death*. Speaker: Monica Brancheau, Mgr. Director. Introduction by Jim Wolfington.

### MEETINGS...

PR/Marketing, 10:30am, Monday, 8/27/2018.



**Art Vuolo, Jr.**

**Officers and Directors**

**President:**

William V. Hampton

**President-Elect:**

Dan Dever

**Treasurer:**

Greg Meisner

**Secretary:**

Kathie Wilder

**Immediate Past-**

**President:**

Alan Burg

**Board Members:**

Marianne D'Angelo  
Deborah Jones  
Margaret Krasnoff  
Evan LeRoy  
Peter Schork  
Ellen Webb



**Newsletter:**

**Editor**

Jerry Brown

**Photos**

Bob Gray

**Publisher**

John Kidle



Do you have news for the newsletter, or are you interested in advertising? Contact Publisher, John Kidle, at [jkidle@gmail.com](mailto:jkidle@gmail.com).

**ASSIGNMENTS FOR THE COMING WEEK...**

Mon-Sat Sale	<u>See Pages 7 and 8</u>
Fri-Sat Sale	<u>See Pages 9 and 10</u>
Vouchers	8/23—Ellen Webb, Jean Robinson, Bob Johnson, Bud Roberts, Garry Evans, Dee Smit, Deb Rydzor, Jim Carey, Mark Lavin
Invocation	Lynne Lande
Meeting Greet-ers	Deb Jones (A), Griff Dick, Bob Greene
Hospitality	Claire Dahl
Newsletter	Jerry Brown
Cashier	Larry French

**GUESTS AT OUR CLUB...**

Allan McMillan (guest of **Luke Panning**), Gordon Miner (**Garry Evans**), Scott Virgo (Ypsilanti Kiwanis), Mamadou Camaro (**Harry Hawkins**), Len Lofstrom and Elissa Benedek (guests of **Dick Benedek**). Welcome all!

**HOSPITALITY...**

**Claire Dahl** announced that Tanya Salamin is facing oral surgery in the near future. **John Dahl** is scheduled for knee surgery on Tuesday, 8/21/2018. 66-year club member **Wally Niemann** would welcome visitors at 5341 McAuley Drive, Ypsi 48197, phone 734-646-4157. **Dale Leslie** reports that former honorary member **Rod Grambeau** would welcome visitors at Arbor Hospice, first floor of the Saline Evangelical Home, enter from the rear of the facility.

**ANNOUNCEMENTS...**

- **Kathy Barden-Perlberg** reported that 42 visitors from 35 local non-profits visited us today for a Kiwanis orientation, building tour and a shopping opportunity. This was the first visit to our building for many and the first visit to a Kiwanis sale for a few. Today's event identified potential club members and sale volunteers and resulted in \$800+ of sales. She thanked all who helped show our club hospitality.



*Kathy Barden and Francine Bomar conducting a Kiwanis Center tour for the Kiwanis Outreach to Non-profits.*




*Kiwanis Outreach to Non-profits: 42 guests from 35 agencies welcomed to the KC to learn more about Kiwanis and the things we do.*

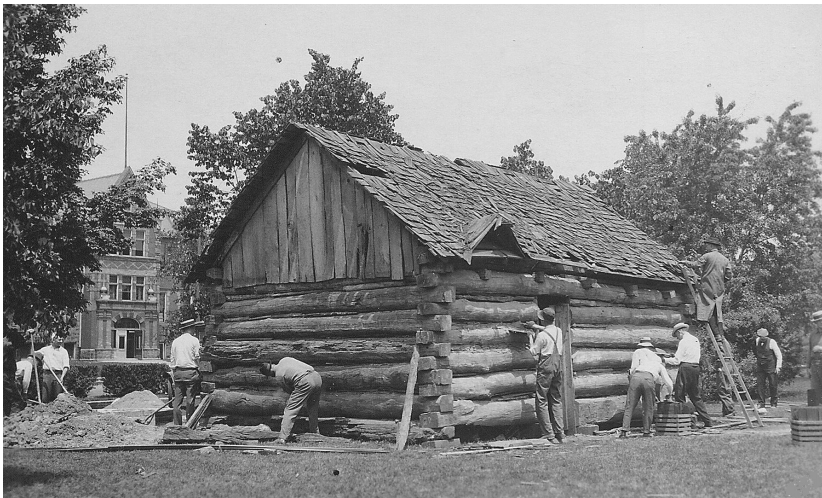
- **Clarence Dukes** called for nominations of 2018-2019 Honorary Members (nominations are due 9/10/2018) and Honored Volunteers.
- The Kiwanis District Convention is scheduled for September 6-9 at Boyne Mountain.
- There will be a super interclub at the Whitmore Lake Club on Thursday, September 20 at 6:30 pm.

**FINES...**

**Garry Evans** proposed a fine on all tables without a guest. **Al Gallup** then proposed a fine on all who has ever listened to or seen a radio. Both passed unanimously according to **President William**.

**HAPPY DOLLARS...**

- ☺ **Kathy Barden-Perlberg** was thankful for club participation in today's outreach event.
- ☺ **Kathy Wilder** was pleased to hear a WEMU interview with **Al Gallup**.
- ☺ **Luke Panning** was thrilled to have performed with Aretha Franklin and will perform, in kilts, at the Michigan Renaissance Festival.
- ☺ **Ann Mattson** presented **President William** with a large "William" plaque.
- ☺ **Dave LaMoreaux** is looking for tips on Isle Royale.
- ☺ **Bud Roberts** thanked **Evan LeRoy** for the sandwich at a recent event (we Kiwanians take care of each other).
- ☺ **Don Kossick** was \$50 happy for his 50th wedding anniversary. 
- ☺ **Harry Hawkins** was pleased to invite us to the annual Meechigan Football Party on 9/7/2018--see Harry for a ticket.
- ☺ **Griff Dick** previewed a new biography about Albert Kahn called Building the Modern World.
- ☺ **Al Gallup** noted that, in 1921, Kiwanis paid to have an early AA settlers cabin moved from the site of the new Tappan School to Burns Park.



*Is this the cabin?*

*Photo courtesy of Ypsilanti Historical Society and Ann Arbor District Library*

**SOCIAL EVENTS...**

- Annual Kiwanis Golf Outing, Thursday, September 13 at Pierce Lake in Chelsea, contact **George Gilligan** NOW if you want to golf or help.
- Meechigan Football Party 2018, Friday, 9/7/2018, 7:00p till 11:00p at German Park. A printed invitation is required for entry. See **Harry Hawkins**.
- The 40th annual YPSIFEST will be held 8/24 (2p to midnight), 8/25 (10a - midnight) and 8/26/ (12p to 6p) in Riverside Park. See [YPSIFEST.COM](http://YPSIFEST.COM) for details.



Known worldwide as the place for the "funkiest" gift.

Check for Special Items on



and



Every Week!

*Since 1921, proceeds from Kiwanis Thrift Sale, gifts from our members, and the work of our volunteers to benefit our community totals over \$6,300,000.*

**Buy Kiwanis Club of Ann Arbor Gear!**



**Click [here](#). Kiwanis Nike Golf Dri-FIT Swoosh Perforated Cap Only \$25!**

# August 2018

Sun	Mon	Tue	Wed	Thu	Fri	Sat
			1	2	3 Sale & Donations: TKC 9-1	4 Sale & Donations: TKC 9-1
5 Noon-3pm Kiwanis Picnic	6 <u>Leuk's Land-ing</u>	7	8 Kiwanis Young Professionals 6:30pm at Dominick's in AA	9	10 Sale & Donations: TKC 9-1	11 Sale & Donations: TKC 9-1 Kiwanis Tiger Game Outing
12	13 <u>U-M Football with Jim Brandstatter</u>	14	15	16	17 Sale & Donations: TKC 9-1	18 Sale & Donations: TKC 9-1
19	20 <u>Local Radio with Art Vuolo</u>	21 6:30pm Board Meeting	22	23	24 Sale & Donations: TKC 9-1	25 Sale & Donations: TKC 9-1
26	27 <u>Reading Labels &amp; Nutrition</u>	28	29	30	31 Sale & Donations: TKC 9-1	

# September 2018

Sun	Mon	Tue	Wed	Thu	Fri	Sat
						1 Sale & Donations: TKC 9-1
2	3 Labor Day	4 <u>Albert Kahn in Detroit</u>	5	6 Kiwanis Young Professionals 6:30pm	7 Sale & Donations: TKC 9-1	8 Sale & Donations: TKC 9-1
9	10 <u>Ele's Place</u>	11	12	13	14 Sale & Donations: TKC 9-1	15 Sale & Donations: TKC 9-1
16	17 <u>Horizon: New Lord Fox</u>	18 6:30pm Board Meeting	19	20	21 Sale & Donations: TKC 9-1	22 Sale & Donations: TKC 9-1
23	24 <u>Installation of Officers</u>	25	26	27	28 Sale & Donations: TKC 9-1	29 Sale & Donations: TKC 9-1
30						



## This Week's Numbers

**Attendance:**  
60

**Fines:**  
\$18.65

**Happy \$:**  
\$70

**Mott Pot:**  
\$0 Today  
\$1,853 YTD

**Vouchers:**  
\$1,313  
9 Families  
\$72,807 YTD  
378 Families YTD

**Thrift Sale:**  
**Friday:**  
\$7,003  
**Saturday:**  
\$7,812  
**Other:**  
\$0

**TOTAL:**  
\$14,815  
**\$617,091 YTD**  
(Unofficial)



☛ The fact that you are taking time to read this indicates a high aptitude for being a newsletter editor ☛ Email John Kiddle at jkiddle@gmail.com immediately to volunteer ☛☛☛

**THREE-MINUTE SPEECH WITH A BIT EXTRA...**



**Susan Smith**

**Susan Smith** gave her 3.4 minute speech noting that she was born in Lansing and has three siblings. They all attended K-12 in Lansing. Her mother's family was close knit with a great grandmother and grandparents close by. Many of them lived into their mid-nineties. The family has True Blue Blood. Grandpa graduated from UM Dental School in 1905 and there have been 53 family members, including those by marriage, who have at least one degree from UM. Susan liked practical math at UM so her counselor suggested Actuarial Science which she had never heard of.

Following graduation she took a job with a consulting firm where she helped clients design retirement plans for their employees including valuing those plans to determine minimum and maximum contribution limits. Susan worked in Philly for 2 years, then Chicago for 17 years, back to Philly for 4 years and finally Detroit for 7 years where she retired at age 51 after 30 years of service. She says that life begins at retirement. While living in Plymouth she joined the Ann Arbor Thrift Shop, the Ann Arbor City Club and Waterman. She moved to a home on Londonderry in Ann Arbor and joined the Rotary in 2002.

At this point she met **Bob Gray** and they have been married 16 years. In 2006 they purchased a second home on Bass Lake in Pinckney where they enjoy visits with family and friends. Hearing so much about Kiwanis from Bob she started as a volunteer two years ago, joined the club a year ago, and now enjoys seeing the fruition of all of the hard work and thoughtful plans of club leadership as the Kiwanis Center achieves new record sales and once again grants monies to many non-profits in the community. In closing, Susan says "Thank you for welcoming me and providing me with a whole group of new friends and a place where I can spend a great deal of time."

**President William** reported that, having visited with Susan, his grandson Shiloh wants to pursue actuarial science.

**SHOPPERS ARRIVE BY THE BUSLOAD...**



A busload of forty shopper stop at the Thrift Sale on Saturday on their way to Adrian for a theater production (Thanks to Carol Presley for arranging the stop at Kiwanis) Photo by Tom Nighswander

**Kiwanis Thrift Sale**  
Kiwanis Club of Ann Arbor

**Two Kiwanis Holiday Sales!**

**1st Annual Two-Day TOY SALE**  
Friday & Saturday Dec 7<sup>th</sup> & 8<sup>th</sup> 9 am - 1 pm

and

**Big Selections of Holiday Gifts and Decorations!**  
Every Friday and Saturday 9 am – 1 pm  
**November 2nd to January 12<sup>th</sup>**

**Kiwanis Thrift Sale**  
100 N. Staebler Rd, Ann Arbor 48103  
Corner of N. Staebler Rd at W. Jackson Rd, Ann Arbor  
(One mile west of Zeeb Rd. & One mile east of Baker Rd.)

Proceeds go to Local Service Programs that Help Kids, Families, and Our Community.

*Items shown are representative of typical sale items, not actual inventory.*

**Help Us – Help Kids!**  
Join - Donate - Volunteer

**Our Sponsored Programs in Service to Youth:**



*"Serving the Children of the World...our motto, our mission"*

**KIWANIS CLUB  
OF ANN ARBOR  
Meetings:**

Noon on Mondays at  
The Kiwanis Center  
100 N. Staebler, Suite C  
Ann Arbor, MI 48103-9755

[www.a2kiwanis.org](http://www.a2kiwanis.org)

Building Phone:  
734-665-2211



**Sale and Donation Hours**

The Kiwanis Thrift Sale  
At The Kiwanis Center  
100 N. Staebler at Jackson  
Fridays and Saturdays  
9am-1pm

Saleable Donation Drop  
Off:  
Fridays and Saturdays  
9am-12:30pm

Call for Donation Pickup:  
734-665-0450



**Other Links:**

- [Michigan District Kiwanis](#)  
Click [here](#) to read the latest *Michigan Builder*.
- [Kiwanis International](#)
- [Kiwanis Young Professionals of Washtenaw County](#) Meets 6:30pm first Wednesday of Month
- [U of M Circle K](#)  
Meets 7pm Thursdays at UM Union or League (Check Calendar on Website)
- [Kiwanis Club of Ypsilanti](#)  
Meets Noon Wednesdays at EMU Student Center
- [Ann Arbor Western](#), Meets Noon Tues. at Quarter Bistro

**"Serving the Children of the World"**

Interested in becoming a member? Please send an e-mail to [MembershipGrowth@a2kiwanis.org](mailto:MembershipGrowth@a2kiwanis.org) or visit the website [www.a2kiwanis.org](http://www.a2kiwanis.org).



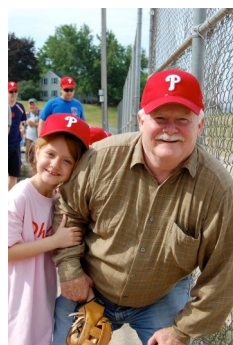
**The Kiwanis Center**

2021 A CENTURY OF SERVICE



KIWANIS CLUB OF ANN ARBOR

**CENTENNIAL MEMORY GEM**



**Mike Anglin** (2004) enjoys the community service aspect of Kiwanis by coaching a youth baseball team. The former Ann Arbor City Councilman, oversees our Meals On Wheels club volunteer program that completes a delivery route every day in the Ann Arbor area.

**Thanks to Our Advertising Supporters...**



**RE/MAX Platinum Realtors, Doug Ziesemer**  
734-769-8111, [dfziesemer@aol.com](mailto:dfziesemer@aol.com)

**Betty Jean Harper, Visiting Vet**  
Veterinary Visits in YOUR Home 734-475-9474

**Andrea Kotch Duda, CFP®, Raymond James and Associates, Inc.**  
[www.RaymondJames.com/andreakotchduda](http://www.RaymondJames.com/andreakotchduda), 248-932-5450

**Clarity Financial Advisors, Mark S. Wishka, ChFC, CFP, CLU, CRPC, CASL, REBC, RHU, CDFA, CLTC—734-995-3996, [markwishka.com](http://markwishka.com)**

**Gardner & Associates, P.C., Attorneys**  
[Ron@GardnerLawAA.com](mailto:Ron@GardnerLawAA.com)

**Jim Carey Realtor®, Charles Reinhart Realtors**  
734-717-5591, [jcarey@provide.net](mailto:jcarey@provide.net)

KEY FOR SORTING GROUP- AD: Admin, DH: Doll Hse, KP:Keep, SO:Sorting, SP:Sorting/Pricing, SR:Sales/Repair, SS:Sorting/Stocking Shelves, TR:Test/Repair, U:Unavailable, VR:Vouchers,			Date:	20-Aug	21-Aug	22-Aug	23-Aug	24-Aug	25-Aug
AREA	Task		M	T	W	Th	F	S	
Aiken, Erin*	Sort	SO	U	U	U	U	U	U	
Anglin, Mike	Sort	SO							
Argyle, Ray	Elct	TR							
Bagchi, Carol*	Lin	SO	U	U	SO	U	U	U	
Barden-Perlberg, Kathy	Sort	SO							
Barhydt, RoseMarie	Voucher	VR							
Bartlett, Lisa*	Jewel	SP	?	U	U	U	U	U	
Bassett, John	Men	SO	SP	U	U	SP	SP	SP	
Bell, Dave	Sorting	TR	TR	U	U	U	U	U	
Berg, Isabel*	Bks	SO	U	U	U	U	U	SO	
Signall, Gloria*	Lin	SO	U						
Birkle, Lea*	To	SO							
Birkle, Mike*	Sort Test/Rep	TR							
Bomar, Francine*	Sort	SO	U	U	SS	U	SS	U	
Boone, Elizabeth*	Cl-W	SO	U						
Brown, Pamela*	Sort	SP							
Buchart, Jean*	KEEP	KP							
Burbridge, Cecile*	Jewelry	SP							
Burg, Alan	Vouch, AD	AD,V							
Burroughs, Dan	Hard, Sort	SO,							
Buttrum, Carole*	Clothes	SO	U	SO	U	U	?	U	U
Carey, Jim	Vouch	VR							
Carr, Bob	Vouch	VR							
Choate, Susan*	Hard	SO	SO	U	U	U	U	U	
Clear, Janet*	HO OS	SO SS	U	U	U	SS	U	U	U
Colley, Karen*	Sort	SO							
Cramer, Susan*	Toy	SO SS							
Dahl, Claire	Fl	SO							
D'Angelo, Marianne	Sort	SP	U					SP	
Dailey, Sue*	Hard	SO							
Damon, Jill*	Cl	SO	U	SP	U	U	U	U	U
Danforth, Jim*	Hard	SO	SO	U	U	U	U	U	U
Day, Mary Beth*	Art	SO	U	U	SO	U	SO	U	
Dever Nick	Sorting	SO							
Dittmar, Larry	Sort	TR	U	U	U	SS	U	U	U
Dittmar, Prudy*	Ho, OS	SO,	U	U	SS	U	U	?	
Drake, Dave	Vouch	VR							
Dries, Jim	Sort	SO	U	U	U	U	U	U	
Evans, Linda*	Dolls	SO,DH							
Evans, Mary*	Dolls	SO,DH							
Ferguson, Mary*	Cl	SO	U	U	U	U	U	U	
Finch, Billy*	Bk	SO,						SO	
Frederick, Murial*	Womens	SO	SO	U	U	SO	U	U	
Gallup, Al	Shoe	SO	SO	U	U	U	U	U	
Gallup, Karen*	SO	SO	SO	U	U	U	U	U	
Gerlinger, Rick*	Test/Rpair	TR	U	U	U	TR	U	U	
Gilligan, George	Lig, El	TR	U						
Grapentine, Gloria	Womens	SO							
Gravlin, Katherine*	Bk	SO SS	U	U	SO	U	U	U	
Gray, Bob	Floor, AD	TR,SO	AD	U	AD	AD			
Hadwin, Karen*	Sort	SO	U	U	U	U	U	U	
Hanton, Doug	Hard	SO,SS	SO	U	U	SO	U	U	
Harback, Mike*	Bk	SO SP	U	U	SO	U	U	SO	
Harper, Betty	Bk	SO SS	U						
Hartman, Alice*	Cloth	SO	U	U	U	SO	U	U	
Henry-Fisher, Mia*	Soft goods	SO							
Herkhof, Magda	Soft goods	SO							
Hill, Mary*	Cloth	SO	U	SO					
Hillenburg, Ken	Vouchers								
Ishmeal, Elaine*	SO	SP	U	U	SO	U	SO	U	
Johnson, Bob	Cash so	SO,				VR			
Johnson, Linda*	Sort, Drafts	SO	U	U	U	U	SO	U	
Kavanagh, Gary	Sort	SO SS	U					SO	
Keyes, Sharon	Ar	SO SS	U	U	SO	U	SO		
Kidle, John	El Li	TR	U	U	U	U	U	U	
Kraznoff, Margret	Dolls	D							
Lamoreaux, Dave	Mens	SP	SO	U	U	SO	?	SO	
Lavin, Eloise	Vouches	VR							
Lavin, Mark	Vouches	VR				VR			
Leslie, Dale	Vouches	Vr				VR			
Lillie, Joan*	Toy	SO	U						
Lutton, Louise*	An, Lin,Kid	SO SS	SO			SO			
Lyman, Fran*	Sort	SO							
MacDonald, Margaret*	Cloth	SO	U						
Masters, Joan	Clothing								
Maten, Glenda*	Cloth	So SP	U	SP	U	U	SP	U	SP
Maten, Ralph*	Doc	TR	U	TR	U	U	TR	U	TR
Mathews, Joan*	Toys,	SO	U	U	U	SO	U	U	
Mattson, Ann	Sort	SO	U	U	U	U	SO	SO	
Mattson, Jim	Ant/Cam/Sort	SO	U	U	U	U	U	U	
McNish, Jan*	VinTo	SO SS	U	U	U	U	U	U	

**Monday-Saturday  
Sorting,  
Pricing,  
Testing and  
Repair  
Schedule  
Page 1 of 2**

KEY FOR SORTING GROUP- AD: Admin, DH: Doll Hse, KP:Keep, SO:Sorting, SP:Sorting/Pricing, SR:Sales/Repair, SS:Sorting/Stocking Shelves, TR:Test/Repair, U:Unavailable, VR:Vouchers,			Date>	20-Aug	21-Aug	22-Aug	23-Aug	24-Aug	25-Aug
	AREA	Task		M	T	W	Th	F	S
Meisner, Greg									
Meneghini, Linda*	Lin	SO	U	SO	U	U	SO	SO	U
Meretta, Jim	Shoes	SO,SP					SO		
Messer, Joan*	Sort	SO		SO					
Misko, Susan*	Sort	SO		SO	U	SO	U	U	U
Mortonsen, Cynthia	Sort	SO							
Neff, Merry*	Cloth	SO		SO	U	U	SO	U	SO
Nuhn, Rob*	Sort	TR	U						
Olcott, Cynthia*	Lin/Fabrics	SO		U	U	U	SO	U	U
Orlowski, Bill*	Repair	TR							
Penkalski, Sandra*	Sort	SO		SO					
Petrowski, Martha	Sort	SO							
Presley, Carol	Sort/VR								
Preston, Gretchen	Sort	SO							
Rabidoux, Sandra *	Sort	SO SS	U					U	
Raggett, James*	Bikes	TR					TR		
Raubolt, Dan*	Elect	TR		U	U	U	U	TR	TR
Rescorla, Meg*	So	So							
Richard, Veronica*	Jewel	SO.							
Robb, Bill	Elect	SO TR		U	U	U	U	U	U
Robb, Michele	Sort	SO SS							
Roberts, "Bud"	vouchers	VR					VR		
Robinson, Jean	Vouchers	VR							
Rupp, Brittany*	Repair	TR							?
Rydzon,Debbie*	Sort, Vouch	SO		U	U	U	VR	SO	U
Schaffner, Paul*	HW	TR							
Schenk, John	Art	SO SS							
Schuman, Fred*	Bk	SO SS		U	U	SO	SO	U	U
Schuman, Rhonda*	Bk	SO SS		U	U	SO	SO	U	U
Sibole, Ann*	Sort	SO		SO	U	U	SO		
Smit, Dee*	Vouchers						VR		
Smit, Dick	Men	SO		SO	U	U	SO	U	SO
Smith, Susan M	Sort	SO SS					SO		
Soden, Sally*	Sort Gl	SS		SO	U	U	U	U	U
Springer, Sallie	Sort	SO							
Stephens, Gloria*	Toys, Pz	SO,		U	U	U	U	SO	U
Stewart, Mary	Sort/Pr	SO,			SO	SO	SO	SO	SO
Stuber, Elsa*	Sort	SO		U	U	U	U	U	U
Summers, Carla	Sort	SO,					VR		
Supica, Sue*	Glass	SO							
Supica, Max	Mens	SO		SO			SO		
Vondenberger, Annette*	Sort	SO		U	U	U	U	U	SO
Walker, Ava*	Sort	SO		U	U	U	U	U	?
Webb, Ellen	SO, SP	SP					VR		
Wells, Marcia*	Glass	SO	U		?		SO	?	
Wells, Sherrel*	CL	SO		U	U	U	U	SS	SS
Wilder, Kathie	Cl	SO,							
Ziegler, Carol*	Cl-W	SO	U	SO	U	U	U	U	U
Ziegler, Max	Sort	SO		U	U	U	U	U	U

Monday-Saturday  
Sorting,  
Pricing,  
Testing and  
Repair  
Schedule  
Page 2 of 2

Friday and Saturday Sale Workers Schedule Page 1 of 2

Key for F & S Sale Workers. A:Available, CC:Cashier, CS:Cashier/Sales, DK:Dock, GR:Greeter, FTL: Frontend Team Leader, P:Preferred work date, SK:Sales/Dock, SA or SS:Sales, WR: Wrapper, U:Unavailable,			24-Aug	25-Aug
Day of week>	Area	Task	F	S
			9-1	9-1
Allshouse, Emily	Cash	CC	U	
Argyle, Ray	Elect	SS	SS	SS
Babcock, Bryce	Cash, Sales	CS	U	U
Barden, Bob	Dock, Floor	SS	DK	
Barden, Kathy	Greet, Cassh	GR,CS		
Barhydt, Rose Marie	Greet?/Antiq	GR,SS		
Bartlett, Lisa*	Jewel	CS		CS
Beeman, Gordon	Cash, Sales	CS	CC	
Blomquist, Jim	Dock, Sales	SS		
Brokaw, Ted	Cash	CC/WR		
Brown, Jerry	Greet, Sales	CS, GR		
Burbridge, Cecile*	Jewel	CC, CS		
Burg, Alan (SS)	Sales	SS		
Carrier, Kelly	Sort	SO		
Clemence, Mary*	Jewel	CS	CS	
Colwell, Amanda	Dock, Sales	SS		
Dabbs, Mike	Sales	SS	U	U
Dahl, Claire	Cash, Sales	CS	U	U
Dahl, John	Cash, Greet		U	U
Dever, Dan	Variable	DK, SS,WR		
Dever Nick	Dock, Sales	SS/DK	SK	SK
Dever, Nancy	Greeter, Sales	GR,WR		GR
Dick, Griff (SS)				
Dittmar, Larry	Sales	SS		SS
Dukes, Clar	Cash, Sales	CS	U	U
Evans, Garry	Cash	CC		
Evans, Mary	VintToys	SS		
Fomby, Paula				
French, Larry	Cash, Sales	CS		
Gardner, Ron	Sales, Greet	SS,Gr		
Gilligan, George	Dock, Sales	SS	DK	
Grachak, Caroline	Wrap, Sales	WR		
Gray, Bob	Everywhere	CS, FTL	FTL	FTL
Haas, Jared*	Camera	SS		CS
Hampton, William	Dock	DK		
Harper, Betty (SS)	Books,	SS, SO		
Hillenburg, Ken	Cash, Sales	CS		
Hiller, Steve	Dock,sales	DK		
Hitchcock, Kate*	Jewel	CS		
Hughes, Dave	Cash	CC/WR		
Johnson, Bob	Cash, Shoes	CC, SO		CC
Johnson, Demond	Dock	SS		
Jones, Deb	Cash, Sales	CC, CS		
Jones, Ken*	Ant/Coll	CC, CS	CS	
Krasnoff, Margaret	(Sub)	CC, CS	U	
Krueger, Susan*	Jewel	CS		
Lande, Lynne	Greet,Sales	CC, CS		
Lavin, Eloise	Cash, Sales	CC	CC	
Lavin, Mark	Cash, Wr	Wr	CC	
LeRoy, Evan	Cash, Dock	CS		
Leslie, Dale	Greeter, Sales	FI		A
Luke, Gerry	Sales	SS	U	SS

Friday and  
Saturday  
Sale Work-  
ers  
Schedule  
Page 2 of 2

Key for F & S Sale Workers. A:Available, CC:Cashier, CS:Cashier/Sales, DK:Dock, GR:Greeter, FTL: Frontend Team Leader, P:Preferred work date, SK:Sales/Dock, SA or SS:Sales, WR: Wrapper, U:Unavailable,					24-Aug	25-Aug
Day of week>					F	S
	Area	Task			9-1	9-1
Maten, Glenda*	Jewel	CS				CS
Mattson, Jim	Camera	CS			CC	CS
Miller, Fred	Sales	SS				
Panning, Luke	Dock	DK				
Phibbs, Charlie	Sales, Elect	SS				
Powers, Dennis	Sales-An	CC			U	U
Presley, Carol*	Sales, Greet	SS.GR				CS
Richard, Veronica*	Jewel	CS			CS	
Robb, Bill	Elec	SS				SS
Robb, Michele	Cash, Sales,	CS, SO				
Roberts, "Bud"	Wrapper	WR			WR	WR
Rolka, Lynn*	Jewel	CS				
Sampselle, John (CC)						WR
Sanchez, Fred	Cash, Sales	CC, CS				
Schenk, John	Sales, Dock	SS SO				
Schork, Peter	Sales, Dock	SS DK				
Schmerberg, Kurt	Dock	DK				
Service, Genia*	Jewel	CS				
Shaw, Ron	Sales, Dock	SS, SK				
Sheldon, Cliff	Cash, Sales	CC				
Smit, Dee*	Greet	GR			GR	
Smit, Dick	Sales-Mens	SO, SS			SS	
Soyars, Caroline	Gr Wr				U	
Springer, Sallie*	Cash, Sort	CS, SO			CC	
Stephenson, Meg*	Jewel	CS				SS
Summers, Carla	Cash	CC			CC	
Tse, Leo	Dock	DK				DK
Webb, Ellen	Cash	CC FTL			FTL	FTL
Wilder, Kathie	Cash/Sales	CCCS				CC
Williams, Julanne	Cash, Sales	CS				CC
Williams, Nicolette	Cash, Sales	CS				CC
Wolfington, Jim	Jewel	CS				